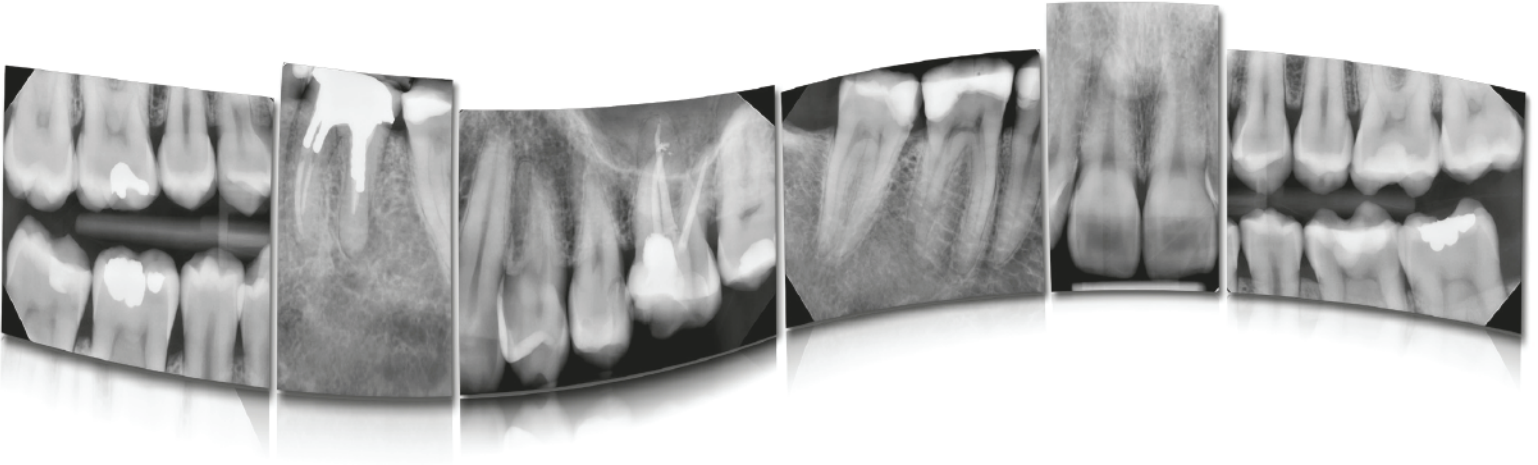
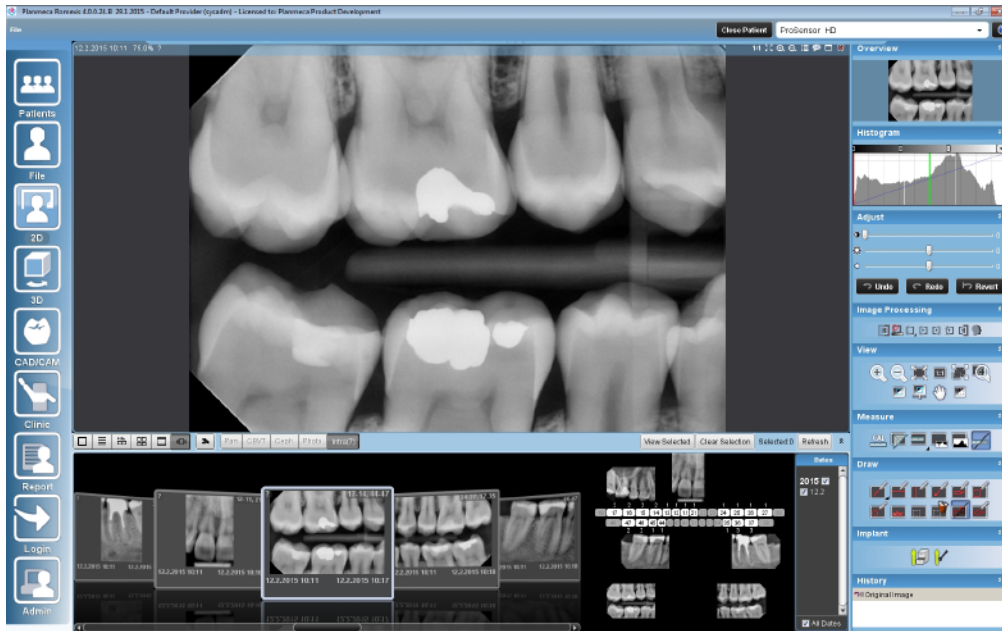


Planmeca ProSensor® HD



- HD imaging quality for a detailed diagnosis
- Ergonomic design with rounded corners and 3 sizes (0,1,2) for patient comfort
- Magnetic connectors for one-handed use and portability
- Hermetically sealed and capable of full immersion in disinfectant for simple asepsis
- Durable Kevlar construction for a lasting investment
- Native to Planmeca Romexis® and integrates with most 3rd Party imaging software
- 3 year warranty





Experience True HD like never before

The Planmeca ProSensor® HD intraoral sensor offers a unique combination of unparalleled usability, state-of-the-art image quality, and patient-centered design.

True HD image quality

Planmeca ProSensor® HD offers real HD image quality and low-noise, high-contrast images. The wide dynamic range of the sensor provides successful results.

Usability comes standard

Planmeca ProSensor HD can be integrated into the Planmeca ProX™ intraoral X-ray unit, or connected through Ethernet or a USB port. The sensors are magnetically connected for easy one-handed use and easy portability.

