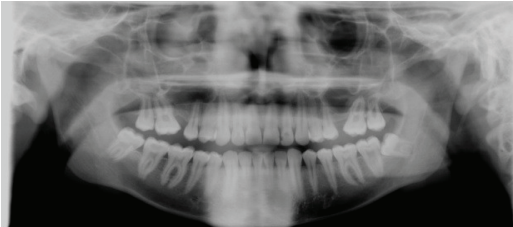
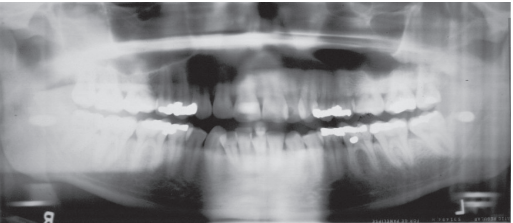

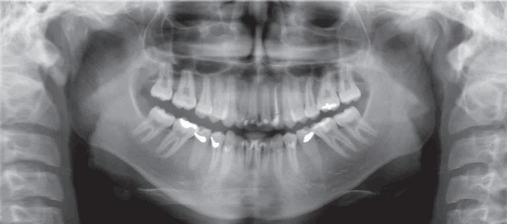
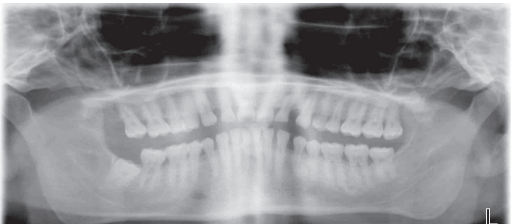


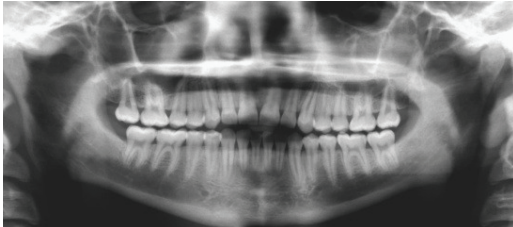
IMAGE	ERROR	CAUSE	REMEDY
	Radiopacity in the mandibular symphysis	Vertebrae is truncated Notice the spine angulation and lack of spine in the image	Position patient's neck in a more upright, neutral position, bring patient's feet forward
	Radiopaqueness throughout image Large anteriors	Layer light or AutoFocus layer light positioned too far forward Notice no spine in the image	Move layer light back to root tip of tooth #9
	Small teeth and lots of spine in the image	Layer light or AutoFocus layer light positioned too far back Notice the small teeth and the amount of spine in the image	Move layer light forward to the root tip of tooth #9
	Exaggerated smile (curve of spee)	Patient's chin positioned too low	Raise panoramic to raise patient's chin
	Frown curve of spee	Patient's chin positioned too high	Lower panoramic to lower patient's chin

IMAGE

ERROR

CAUSE

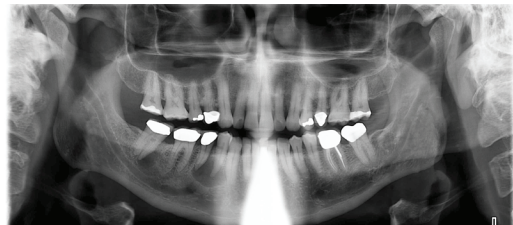
REMEDY



Flat curve of spee

Patient's chin positioned too high

Lower panoramic to lower patient's chin



Radiopacity in lower anteriors

Lead apron positioned too high on the back of patient

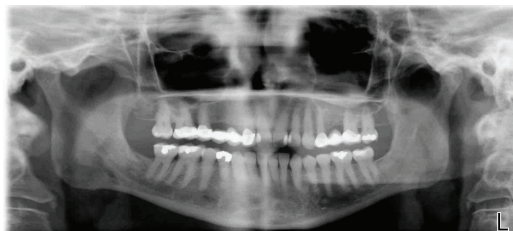
Position lead apron high in the front and low in the back



Tilted image
Notice one condyle higher than the other

Midsagittal laser misaligned
Patient tilted

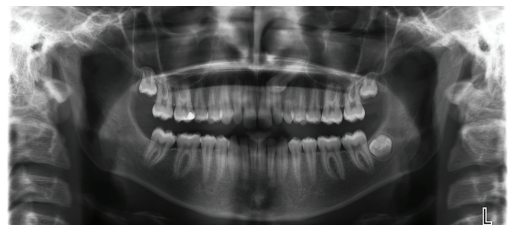
Position midsagittal light in the center of the nasion



Ramus and teeth are different sizes on opposing sides

Patient twisted

Ensure patient is positioned straight in panoramic



Radiolucent arch through maxilla

Patient's tongue not on the roof of mouth

Notice dark arch throughout maxilla darkening the apices

Instruct patient to close lips, swallow, and suction tongue to roof of mouth

EDU009A.2019