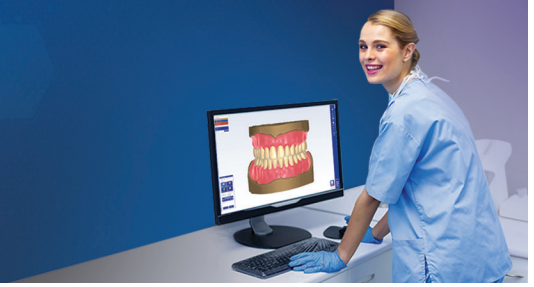


The Clear Path to Digital Restorations and Appliances



Planmeca has joined forces to open solutions for same-day restorative dentistry.

Take advantage of this premium offer today.



Planmeca PlanMill® 35

Wet or dry milling capabilities with automatic tool changer for 5 tools.

Features:

- Mill inlays, onlays, veneers, and up to 3-unit bridges
- Fast milling times for a broad range of materials, including zirconia
- Automatically selects the proper tool for each restoration; detects and replaces worn or broken burs
- Guided maintenance — from daily cleanings to preventive maintenance notifications

Planmeca PlanMill® 60 S

Flexibility capabilities of block and disc milling.

Features:

- 5-axis lab-grade unit for high production use
- Wet or dry milling
- Broad range of materials
- Open to integrate with leading scanners



Get a **Planmeca Emerald® S** for **\$8,500 OFF MSRP**

Ackuretta SOL LCD 3D Printer

Move forward with this open 3D printer for all applications from surgical guides to full dentures at 3-times the speed of SLA printers.

Have versatility with over 150 prevalidated resins, including Pac-Dent, Keystone, and VOCCO.

Offer Includes:

- Ackuretta SOL LCD 3D Printer
- CLEANI Wash Station
- CURIE Curing Unit
- Concierge Service including remote installation, training, and support plus a 2-year warranty

Up to **\$900** of **FREE** goods from Ackuretta and **\$300** design service credit from 3DDX available.



Contact your local Planmeca representative for more information (800) 718-4598



Offer available from May 1, 2023 through June 30, 2023 through specified Planmeca and Ackuretta dealers in the US. Purchase orders must include the promo code **PRINTBUNDLE**.

For full terms and conditions, visit planmeca.com/na-promotions

[SCAN HERE TO LEARN MORE](#)

All products listed are the trademark of the registration owner.

PLANMECA
Better care through innovation