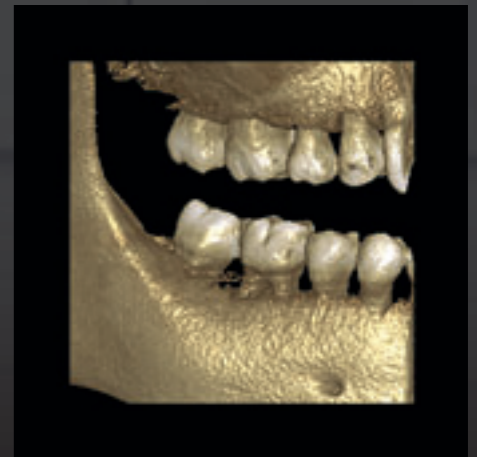
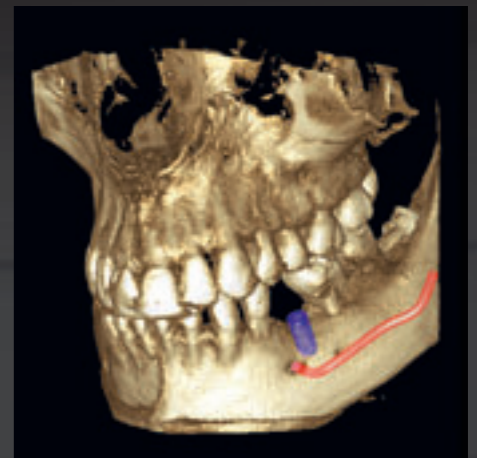


Planmeca ProMax all volume sizes



*Perfect field size
for all needs*

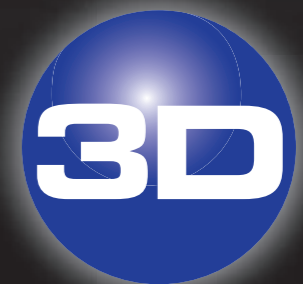


*Visit IDS 2009.
Meet us at stand
G/H 010/011, hall 11.1.*

The Planmeca ProMax concept offers a full range of imaging volumes providing detailed information on patient anatomy. The comprehensive Planmeca ProMax platform complies with every need in dental radiology, offering digital panoramic, cephalometric, and 3D imaging together with advanced imaging software. At the heart of the concept is the robotic SCARA technology: the unique robotic arm enables any movement pattern required by existing or future program, eliminating all imaging restrictions. With the Planmeca ProMax concept superior maxillofacial radiography can be performed with a single platform, today and in the decades to come.



Planmeca Oy, Asentajankatu 6, 00880 Helsinki, Finland
tel. +358 20 7795 500, fax +358 20 7795 555
sales@planmeca.com, www.planmeca.com



PLANMECA