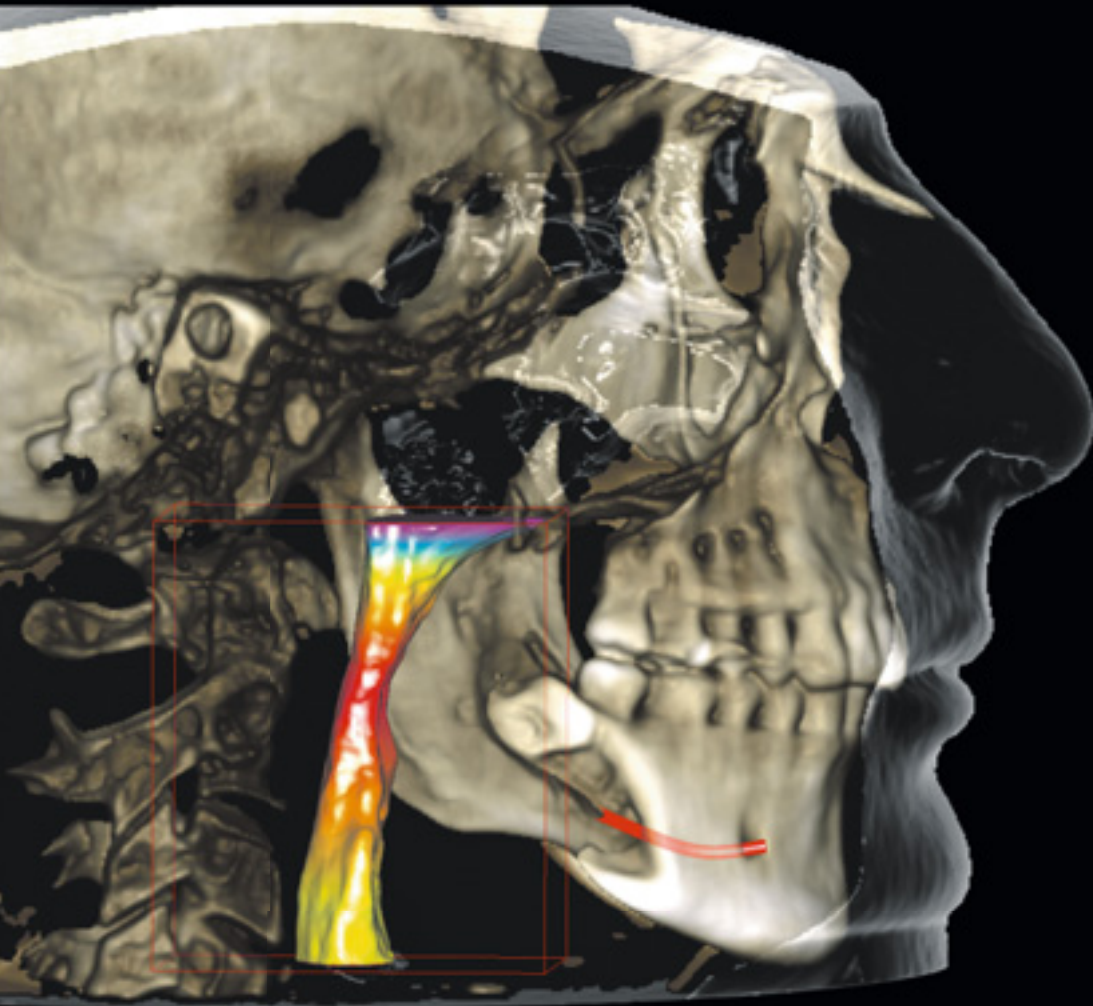


# Planmeca Ultra Low Dose™



3D imaging with  
an even lower dose  
than panoramic  
imaging

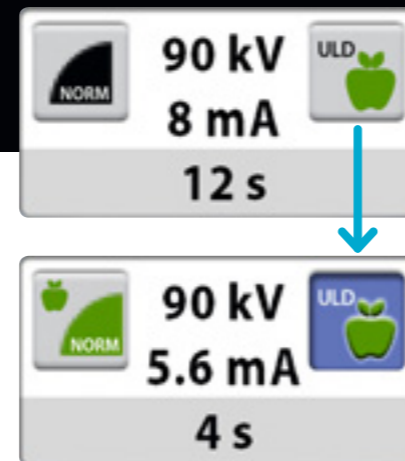
# Pioneering low dose 3D imaging

*Planmeca ProMax® 3D units offer a unique Planmeca Ultra Low Dose™ imaging protocol that enables CBCT imaging with an even lower patient radiation dose than standard 2D panoramic imaging.*



## Planmeca ProMax® 3D Mid

- FOV Ø 200 x 170 mm / Voxel size 600 µm
- Effective patient dose 14.7 µSv



## Ultra low dose imaging

Planmeca Ultra Low Dose™ is an intelligent imaging protocol that can be used with all voxel sizes and in all imaging modes from Normal to Endodontic mode. Using the Planmeca Ultra Low Dose protocol reduces the effective patient dose by up to 75–80%.

## Doctor testimonial

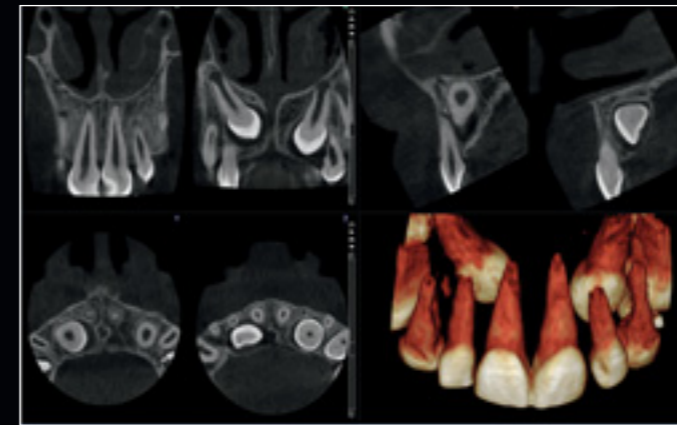


**Dr Jorma Järnstedt**  
DDS, Specialist in Oral and Maxillofacial Radiology,  
Department of Radiology, Medical Imaging Centre, Tampere University Hospital, Finland

"We have been using the new Planmeca Ultra Low Dose protocol since summer 2013, and we have found it to be very useful in many imaging indications. These include postoperative follow-up, orthodontic cases requiring localization of impacted teeth and their effects on the neighbouring ones, detection of facial asymmetries, sinus imaging in certain ENT cases where sinusitis needs

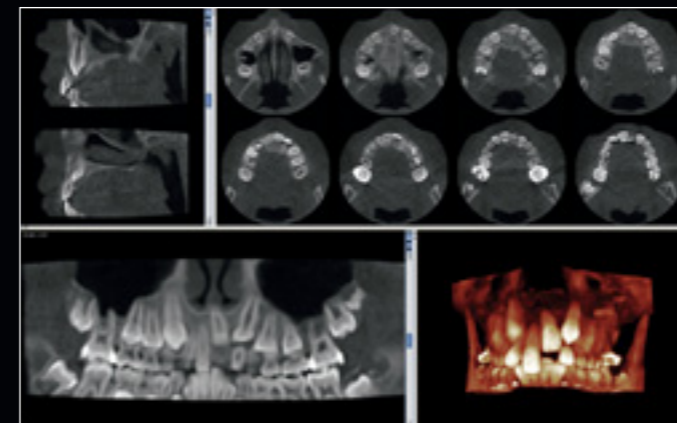
to be excluded, pharyngeal airway measurements in sleep apnea patients, as well as many implant cases.

The new imaging protocol has already changed traditional imaging practices: in many cases, 2D imaging can no longer be justified, since an ultra low dose 3D image simply gives so much additional information at a similar radiation dose."



## Planmeca ProMax® 3D Classic

- FOV Ø 40 x 50 mm / Voxel size 150 µm
- Effective patient dose 14.4 µSv



## Planmeca ProMax® 3D Max

- FOV Ø 85 x 50 mm / Voxel size 400 µm
- Effective patient dose 4.0 µSv

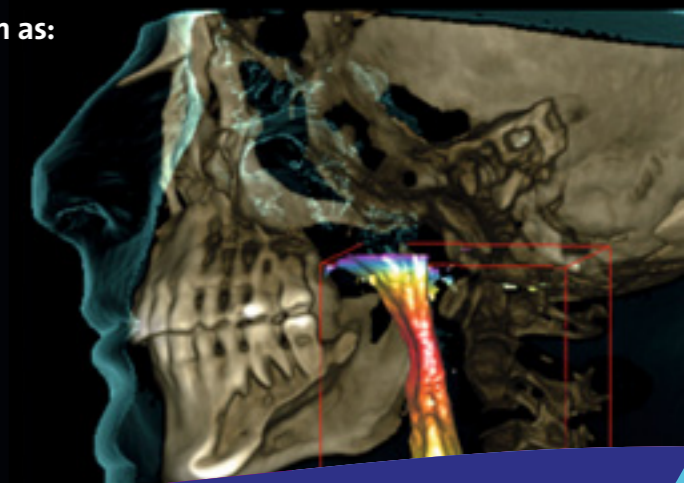


## Planmeca ProMax® 3D Mid

- FOV Ø 200 x 170 mm / Voxel size 600 µm
- Effective patient dose 29.2 µSv








## Ultra low dose images are ideal for many clinical cases, such as:

- Orthodontics:
  - Defining the amount of bone around the root
  - Localizing unerupted and impacted teeth before orthodontic treatment
  - Defining orthodontic landmarks for cephalometric analysis
- Post-operative and follow-up images in maxillofacial surgery
- Airway studies
- Sinus studies
- Implant planning



# Planmeca ProMax® 3D family

## The optimal 3D unit for every imaging need

		Normal mode		Low dose mode	
		Voxel size	Effective patient dose with ULD 	Voxel size	Effective patient dose with ULD 
	<b>Planmeca ProMax® 3D s</b>				
	Ø 50 x 50 mm – Tooth upper incisors	200 µm	12 µSv	400 µm	3 µSv
	Ø 50 x 80 mm – Tooth incisors	200 µm	21 µSv	400 µm	5 µSv
	<b>Planmeca ProMax® 3D Classic</b>				
	Ø 80 x 80 mm – Teeth	200 µm	38 µSv	400 µm	10 µSv
	<b>Planmeca ProMax® 3D Plus</b>				
	Ø 90 x 90 mm – Teeth	200 µm	34 µSv	400 µm	9 µSv
	Ø 160 x 90 mm – Jaw	400 µm	31 µSv	600 µm	11 µSv
	<b>Planmeca ProMax® 3D Mid</b>				
	Ø 100 x 100 mm – Teeth	200 µm	40 µSv	400 µm	8 µSv
	Ø 200 x 100 mm – Jaw	400 µm	31 µSv	600 µm	11 µSv
	Ø 200 x 170 mm – Face	400 µm	50 µSv	600 µm	18 µSv
	<b>Planmeca ProMax® 3D Max</b>				
	Ø 130 x 130 mm – Face	200 µm	54 µSv	400 µm	16 µSv
	Ø 230 x 160 mm – Skull lower	400 µm	60 µSv	600 µm	29 µSv
	Ø 230 x 260 mm – Skull	400 µm	75 µSv	600 µm	43 µSv

# PLANMECA

Asentajankatu 6 | 00880 Helsinki | Finland | tel. +358 20 7795 500 | fax +358 20 7795 555 | sales@planmeca.com | www.planmeca.com

Images may contain optional items not included in standard delivery. Available configurations and features may have country or area specific variations. Some products displayed above may not be available in all countries or areas. Rights for changes reserved.

Planmeca, All in one, Anamat Plus, Cobra, Comfy, DentoVac, Digital perfection, Economat Plus, Elegant, Flexy, Mini-dent, Perio Fresh, PlanEasyMill, Planmeca AINO, Planmeca ARA, Planmeca CAD/CAM, Planmeca Chair, Planmeca Clarify, Planmeca Compact, Planmeca Intra, Planmeca iRomexis, Planmeca Lumion, Planmeca Maximity, Planmeca Minea, Planmeca Minendo, Planmeca Minetto, Planmeca Noma, Planmeca Online, Planmeca PlanCAD, Planmeca PlanClear, Planmeca PlanMill, Planmeca PlanScan, Planmeca Planosil, Planmeca ProCeph, Planmeca ProFace, Planmeca ProID, Planmeca ProMax, Planmeca ProModel, Planmeca ProOne, Planmeca ProScanner, Planmeca ProSensor, Planmeca ProX, Planmeca Romexis, Planmeca Serenus, Planmeca SingLED, Planmeca Sovereign, Planmeca Ultra Low Dose, Planmeca Vision, Planmeca Verity, Planmeca Waterline Cleaning System, Planmeca Xtremity, Proline Dental Stool, ProTouch, Saddle Stool, SmartPan, SmartTouch, Trendy and Ultra Relax are registered or non-registered trademarks of Planmeca in various countries.

